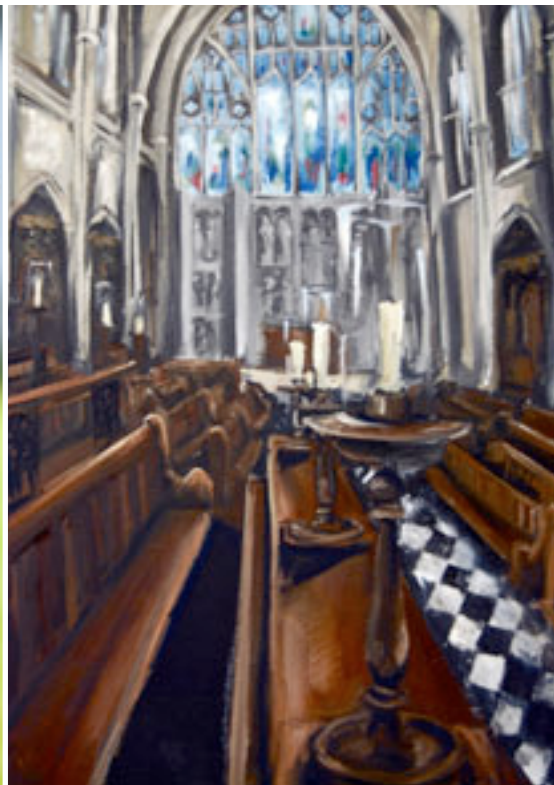


Cheltenham College

GIRLS AND BOYS 13 to 18

BOARDING / DAY



Admissions and Information
2011/2012

Contents

1. Who's Who
3. Our Ethos
4. Registration & Admissions Procedure
7. Policies
8. Fees
10. Bursaries
11. Scholarships & Awards
18. Directions
19. Registration Form
21. 13+ Scholarships Application Form
23. 16+ Entrance Assessment Application Form

Who's who

The Revd. John Horan	President of Council president@cheltcoll.gloucs.sch.uk	01242 265600
Dr Alex Peterken	Headmaster headmaster@cheltcoll.gloucs.sch.uk	01242 265628
Ms Karen Davies	Deputy Head (Pastoral) davies.karen@cheltcoll.gloucs.sch.uk	01242 265600
Mr Duncan Byrne	Deputy Head (Academic) byrne.duncan@cheltcoll.gloucs.sch.uk	01242 265600
Mr John Champion	Bursar champion.john@cheltcoll.gloucs.sch.uk	01242 265686
Mr Andrew Gasson	Assistant Head (Co-curricular) gasson.andrew@cheltcoll.gloucs.sch.uk	01242 265600
Mrs Caroline Wood	Director of Admissions and Marketing wood.caroline@cheltcoll.gloucs.sch.uk	01242 265662
Mrs Emma Ryan	Registrar; for all 13+ to 16+ entry queries ryan.emma@cheltcoll.gloucs.sch.uk	01242 265680
Mrs Samantha Palmer	Assistant Registrar; for all preliminary admissions enquiries admissions@cheltcoll.gloucs.sch.uk	01242 265662
Miss Rachel Vicary	Marketing Manager; for all marketing and public relations queries vicary.rachel@cheltcoll.gloucs.sch.uk	01242 265683

Non Academic Scholarship Responsibilities

Mr Mark Ward	Head of Art ward.mark@cheltcoll.gloucs.sch.uk	01242 265600
Mr Graham Cutts	Head of Design Technology cutts.graham@cheltcoll.gloucs.sch.uk	01242 265600
Miss Sian McBride	Head of Extra-curricular Drama mcbride.sian@cheltcoll.gloucs.sch.uk	01242 265600
Mr Gordon Busbridge	Director of Music busbridge.gordon@cheltcoll.gloucs.sch.uk	01242 265600
Mr Karl Cook	Sport Scholarship Co-ordinator cook.karl@cheltcoll.gloucs.sch.uk	01242 265600

Special Responsibilities

Dr Mary Plint	Director of Learning plint.mary@cheltcoll.gloucs.sch.uk
Mr Jonathan Pepperman	Head of Upper College pepperman.jonathan@cheltcoll.gloucs.sch.uk
Mrs Jenny O'Bryan	Head of Lower College obryan.jenny@cheltcoll.gloucs.sch.uk
Ms Sarah Proudlove	Head of Third Form proudlove.sarah@cheltcoll.gloucs.sch.uk
Mr Karl Cook	Prep School Co-ordinator cook.karl@cheltcoll.gloucs.sch.uk
Mrs Christina Conner	Scholarships Co-ordinator conner.christina@cheltcoll.gloucs.sch.uk
Mr Dominic Faulkner	Director of Activities faulkner.dominic@cheltcoll.gloucs.sch.uk
Dr Richard Woodberry	Head of Higher Education & Careers woodberry.richard@cheltcoll.gloucs.sch.uk
Dr Georgina Jardim	Tutor for International Pupils jardim.georgina@cheltcoll.gloucs.sch.uk
Mr Martin Stovold	Parental Relations stovold.martin@cheltcoll.gloucs.sch.uk

Housemasters and Housemistresses

Mrs Anna Cutts	Ashmead (Girls)	cutts.anna@cheltcoll.gloucs.sch.uk
Mr Sebastian Bullock	Boyne House (Boys)	bullock.sebastian@cheltcoll.gloucs.sch.uk
Mrs Holly Mérigot	Chandos (Girls)	merigot.holly@cheltcoll.gloucs.sch.uk
Mr Nick Nelson	Christowe (Boys)	nelson.nick@cheltcoll.gloucs.sch.uk
Mr Simon Conner	Hazelwell (Boys)	conner.simon@cheltcoll.gloucs.sch.uk
Mr Chris Reid	Leconfield (Boys)	reid.chris@cheltcoll.gloucs.sch.uk
Mr Fergus Llewellyn	Newick House (Boys)	llewellyn.fergus@cheltcoll.gloucs.sch.uk
Mrs Wandrille Bates Mr Will Bates	Queen's (Day Girls) Queen's (Day Girls)	bates.wandrille@cheltcoll.gloucs.sch.uk bates.will@cheltcoll.gloucs.sch.uk
Mr Barry Lambert *	Southwood (Day Boys)	lambert.barry@cheltcoll.gloucs.sch.uk
Mrs Sue Jackson	Westal (Girls' 6th Form)	jackson.sue@cheltcoll.gloucs.sch.uk

* *Senior Housemaster*

A full list of all College staff can be found on our website: www.cheltenhamcollege.org/staff-list1

Our Ethos

Academic

Cheltenham College is proud of its reputation in providing a broad all-round education. Academic attainment is at the centre of everyday College life; pupils require the best examination results they can possibly achieve in order to enter university and to unlock opportunities in later life. As a boarding school, the school day is long and intensely rewarding. Once lessons have finished there is dedicated time for extra-curricular activities and sport before study recommences in the early evening. This structure is fundamental to pupils' success in all areas and enables our outstanding provision of sport, music, drama and outdoor pursuits etc to complement academic achievement rather than compete with it.

A key aim of College academic life is to enable pupils to become self-motivated and autonomous learners. Tutors, led by our Director of Learning, deliver sessions on the skills required for independent learning, focusing increasingly on revision and exam technique as pupils approach GCSE and A Level. Individual academic research projects are a feature of the curriculum in the Lower Sixth, giving pupils the edge as they compete for the most popular university courses. A group project is part of the Third Form academic curriculum, placing pupils' focus firmly on study skills and independent research from the very beginning of their time at College.

There is also an impressive range of regular subject society meetings, which not only provide intellectual stimulation, but also the opportunity to develop presentational and leadership skills. In addition, Upper College and Lower College academic societies offer pupils an exciting vehicle for academic debate, with pupils of all ages delivering brief papers and presentations based on their research.

Proud of our broad intake, we are determined above all to ensure that pupils of all abilities achieve their academic potential. Regular reporting allows tutors, supported by the Heads of Lower and Upper College, to detect problems quickly and to put in place measures to help address difficulties. We acknowledge that the transition from Prep School is particularly hard for some pupils, and the Head of Third Form closely monitors the academic achievement of each child entering at 13+ so that good study habits are quickly established. In conjunction with the unparalleled quality of pastoral support offered by Housemasters and Housemistresses, this network of academic support ensures that all Cheltonians feel happy, challenged and fulfilled both inside and outside the classroom.

Boarding

College owes its unique atmosphere, ethos and reputation to its status as a true boarding school. The majority of pupils are Full Boarders, occupying eight of the ten Houses, and this is reflected in the timetable of the school week, including weekends.

Day boys and girls benefit significantly from this structure and the many opportunities it provides. They are fully integrated into College life, and Day Houses are open late into the evenings during term time. In common with the Boarding Houses, Day Housemasters and Housemistresses are resident on site.

We also have a limited number of Day Boarders at College; these are Day pupils who are attached to a Boarding House and are part of the boarding community, participating in most House activities. An extra charge on top of the Day fee is payable, which allows Day Boarders to stay overnight in House for up to 20 nights per term. Overnight stays in excess of this incur an additional charge.

To ensure boarding is retained as a central feature of College life, it is the school's policy not to allow Full Boarders to change their status after joining. However, requests are occasionally received for Day pupils, and often for Day Boarders, to become Full Boarders. College is happy to consider such requests, provided there are boarding spaces available.

Registration and Admissions Procedure

Introduction

The majority of pupils join Cheltenham College at 13+ and enter our Third Form (Year 9). Around 30 new pupils join each year at 16+ into the Sixth Form. There are a limited number of places available for entry at 14+.

In all cases, entry is subject to passing the necessary entrance tests and receipt of satisfactory references from the pupil's present school. In addition, all pupils are expected to visit College on at least one occasion prior to receiving a confirmed place offer.

The typical admissions journey for a 13+ pupil includes the following steps:

- Visit
- Registration
- Entrance Day
- Place Offer subject to Common Entrance (CE) or the equivalent
- Place Acceptance up to 18 months prior to entry
- Attainment of the required CE or equivalent examination standard.

The process at both 14+ and 16+ is broadly similar but involves the offer of a place only once the required examination entry standard has been achieved.

The Admissions Department is responsible for all aspects of the registration, entry and scholarships procedure and will be happy to assist with any additional questions. You can contact us either by telephone: 01242 265662, or if you prefer, by email: admissions@cheltenhamcollege.org. More information can also be found on the Admissions section of our website: www.cheltenhamcollege.org/admissions.

Visiting College

The Admissions process normally begins with a visit to College as this is by far the best way to see what we have to offer. You are welcome to come to one of our Open Mornings, or to book a personal visit on any weekday afternoon during term time. We can also arrange tours on Saturday mornings but these do get booked up well in advance. A visit normally lasts around two and a half hours and you will meet the Headmaster, Deputy Head or another member of the Senior Team who would be instrumental in your child's education. You will also have a tour of College and look around a House with the Housemaster or Housemistress.

If you would like to book a visit, the Admissions Department will be happy to make the necessary arrangements. Registrations for Open Mornings can also be made through our website: www.cheltenhamcollege.org/admissions.

Registration

Registration to place your child on the entry list for admission may be made at any time. For 13+ entry however, this usually takes place two to five years prior to the proposed date of entry. To register your child, please complete the College Registration Form (located at the back of this booklet) and return it, together with the non-refundable Registration Fee of £100. Once accepted, this secures a provisional place on our entry lists and ensures that your child will be considered for a Guaranteed place. Please note that in the event of places being oversubscribed, registration for a place does not automatically guarantee that a place will subsequently be available.

If your child is already at Cheltenham College Junior School, there is no additional Registration fee and a provisional place has already been secured.

House Allocation

It is recommended that you express a preference for two Houses at the time of Registration. We try to meet all House requests but in order to maintain a good balance of backgrounds and talents in each House, as well as in the event of oversubscription, College reserves the right to allocate your child to another House.

In these cases, preference is normally given to those with a sibling already in House (provided Registration is not less than two years prior to entry and excluding requests for Day Boarding) and then to those who have registered their child for a particular House first.

Your child's final House choice is not guaranteed until it is formally confirmed in writing by the Admissions Office.

Entry at 13+

There are three entry routes into College at 13+:

- 13+ Academic Scholarship
- ISEB 13+ Common Entrance
- College Entrance papers - these papers are reserved for pupils from schools that do not prepare pupils for Common Entrance and are normally sat by arrangement with the Registrar. Pupils entering via this route will sit papers in English, Mathematics and French (provided it has been studied for at least two years).

For pupils registered by Year 7, confidential reports are requested from the pupil's current school and they are then invited to attend College's Entrance Day, approximately 18 months prior to entry. This day involves a number of interactive group activities focusing on leadership, problem solving and team work, with pupils getting to know each other, as well as the school, teachers and Houses. Prior to Entrance Day, pupils are required to complete and submit a questionnaire about themselves and their interests.

Immediately following Entrance Day, place offers are made with one of the following outcomes:

- An offer of a Guaranteed place, with confirmation of House allocation, which secures the pupil's entry to College, subject to maintaining the required academic standard at Common Entrance or Scholarship.
- A Conditional place, with confirmation of House allocation, which may be offered to pupils whose results are expected to be borderline; their academic progress will be reviewed in the Autumn Term of Year 8 and, all being well, a Guaranteed place awarded.
- Occasionally a recommendation that parents should consider another school.

There is normally a number of places available for pupils who register after the Year 7 Entrance Day, although this is not the preferred route. Please discuss your individual circumstances with the Registrar, following which, the specific entry process for your child will be agreed. No decisions are taken without prior and close consultation with your child's current school.

Please note: Pupils entering College at 13+ from Cheltenham College Junior School follow a different entrance route. Parents requiring further information about this process should contact either the Registrar or speak directly to the Junior School.

Entry at 14+

There are normally a few places available for entry into the Fourth Form (Year 10) to start the two-year GCSE course.

Candidates are required to be registered and to sit Entrance papers in English, Mathematics, French (where appropriate) and Science. Assessments are held throughout the year.

Scholarships are not available for pupils entering at 14+ although they may, on invitation, be eligible to apply for an internal Scholarship award for entry to the Sixth Form.

Entry at 16+

For direct entry into the Sixth Form (Year 12), pupils are required to be registered and to sit Entrance or Scholarship papers. College holds examination sessions in November or March prior to the proposed year of entry. Candidates applying from overseas may, by agreement, sit Entrance papers at their own school. Supporting references and reports from the candidate's current school must be provided prior to sitting examinations.

UK candidates will be asked to sit three papers selected from the list below. It is expected that pupils will sit entrance papers in those subjects to be studied in the Sixth Form. This is especially important in the case of Mathematics, the Sciences or Modern Languages.

16+ Examination subjects:

- Ancient Greek
- Biology
- Chemistry
- Design & Technology (various options)
- English Literature
- French
- Geography
- German
- History
- Latin
- Mathematics
- Physical Education
- Physics
- Religious Studies
- Spanish
- Theatre Studies
- General Paper

While successful candidates should be aiming for considerably higher, they are required to gain a *minimum* of 5 B grades at GCSE or the equivalent, including a minimum of a C grade in English and Mathematics. All place offers shall remain subject to this standard entrance requirement.

In addition, based on the outcome of the Entrance papers, College may make recommendations about candidates' suitability for certain AS and A level courses and/or stipulate a subject specific GCSE result requirement.



Entry for Overseas Pupils at 13+, 14+ & 16+

Pupils join College from a wide variety of backgrounds, both educationally and geographically. Whilst the overall number of overseas pupils at College is not high, we are proud of the tremendous cultural diversity that we enjoy within our community.

For pupils applying from overseas, and whose first language is not English, entry is normally via the following papers:

- English as an Additional Language
- Mathematics
- A General Paper (at 16+ only)

Supporting references must be provided and papers are sat at College by arrangement with the Admissions Office. Occasionally, and at the discretion of the Director of Admissions, papers may be taken elsewhere provided adequate invigilation can be guaranteed.

All pupils must visit College for an interview. Occasionally place offers are made prior to a candidate visiting the school and in such cases they will then be conditional upon a visit.

Final Acceptance and Conditions

Final Acceptance forms, together with a copy of College's Terms and Conditions, are sent when a place is formally offered. The Final Acceptance Form must be completed and signed by both parents, then returned to the Admissions Office together with the relevant Final Acceptance Fee of £950 for pupils joining either Third or Fourth Form, and £1,250 for Sixth Form entry. This represents a deposit of £700 and £1,000 respectively, with the additional £250 being paid into the Bursary Fund, which enables College to broaden its entry.

Non-EU pupils are normally required to pay a full term's fees as their Final Acceptance deposit.

In all cases, the deposit provides financial security against the final fee invoice that is raised after a pupil has left and will be put towards final outstanding items where necessary. The deposit will be refunded at the time the pupil leaves, minus sums due to College. Once paid, if the pupil does not enter College the deposit will be forfeit.

College reserves the right to require a banker's reference and/or an additional deposit, which would normally be a term's fees, before a pupil normally resident overseas is admitted to College.

Before a boy or girl is admitted to College, parents or guardians must sign their consent to College's Terms and Conditions (attached to the Final Acceptance forms). This includes their consent to adhere to all current College Policies. College reserves the right to revise all policies on an ongoing basis.

Policies

The following policies are available to download from the Cheltenham College website;
www.cheltenhamcollege.org/senior-policies

Admissions, Alcohol, Anti bullying, Assessment recording and reporting, Behaviour, Boarders absent without consent, Bursaries, Child protection, Complaints procedure, Controlled drugs, Curriculum, Data protection, Disability, English for academic purposes, Equal opportunities, Exclusions, Fire safety, First aid, Guardianship, Health and safety, ICT acceptable use, Invites and parties, Learning support, Recruitment, Safeguarding, Searching a pupil, Smoking, Supervision of pupils, Use of restraint, Welfare and safety on trips and Whistle-blowing.

The following policies are available on request from Cheltenham College Reception:

General health education, HIV, Relationships, Religious observance and Serious disciplinary incidents.

Fees 2011-2012

Basic fees (per term)

These are payable termly in advance by the first day of term by direct debit. A nominal charge will be raised for any other method of payment.

A 'Fees in Advance' scheme is also operated by College whereby future terms' fees may be purchased at no more than the fee rate existent at the date of purchase. The 2011 - 2012 fee rate expires on 31 May 2012. 'Fees in Advance' contracts from 1 June 2012 will be calculated on the 2012 - 2013 fee rate. This scheme provides protection against fee increases and can provide additional discounts. Further details can be obtained from the Director of Finance or the Fees Accountant.

Full Boarder:	£9,909
Day pupil:	£7,425
Sixth Form Full Boarder:	£10,209
Sixth Form Day pupil:	£7,725

The Day Boarding charge is £800 per term, payable in advance.

The Day Boarding charge allows for up to 20 nights sleepover in any one term. Additional sleepovers will be charged at £40 per night.

The Council reserves the right to alter basic fees, giving one term's notice of pending alteration (without necessarily specifying the amount), and to impose without notice a surcharge of not more than 5% on each term's basic fee. Other charges may be altered without notice.

Other charges (extras)

The following list is representative of these charges, but is not to be taken as exhaustive:

- Upper College books
- All examination fees
- Optional extras, such as extra tuition, rowing, sailing, shooting on the open range and membership of College Clubs, Societies and Activities, Tours, Theatre and other trips, BUPA medical insurance, personal accident insurance, and the protected fees option
- Personal expenses such as Metro card top-ups, sports equipment and clothing, and charges in House
- Field trip costs for Biology and Geography.

The cost of extras is, in part, dependent upon the extent to which a pupil becomes involved in the available activities and is therefore difficult to assess. It is recommended that for budgeting purposes, parents should work on a figure equal to around 10% of gross basic fees. The cost of BUPA medical insurance, personal accident insurance and the protected fees option are additional to this.

Charges for Music (per term)

Individual lessons (first instrument)	from £198 per term
Subsequent instruments	from £177 per term
Hire of School Instruments (inc. insurance)	£25 per term (for a maximum of 6 terms)

Incidental charges such as instrument repairs or exam entries are charged at cost.

Charges for Learning Support and English as an Additional Language (EAL)

Where teachers or tutors believe that a pupil could benefit from additional regular specialist tuition, the Director of Learning will contact parents to offer support and indicate the level of support suggested. If parents accept the offer, lessons will be arranged.

Parents of children who are known to have Learning Support needs should make this known at the time of Registration (or as soon thereafter as it becomes known) so that the appropriate level of support can be discussed with the Director of Learning.

At the start of each academic year, the needs of EAL students are assessed. The Head of Department will notify parents of the appropriate level of support needed if any additional support is deemed to be necessary.

There are four levels of EAL/Learning Support offered and termly charges are as follows:

Level 1; £125

Level 2; £250

Level 3; £375

Level 4; £500

Further details relating to charges and the level likely to be appropriate for your child may be obtained from the Director of Learning.

Examinations

Additional charges, at the standard hourly rate of £15, apply for any additional staffing required for separate examination arrangements such as readers, scribes and invigilators.

Contact

Further details on the 'Fees in Advance' scheme can be obtained from the Director of Finance on 01242 265641 or alternatively, and also for general information on fees, the Fees Accountant on 01242 265643 or by email: accounts@cheltcoll.gloucs.sch.uk.



Bursaries

We are committed to widening access by providing bursaries for pupils who, without such help, might otherwise not be able to attend. College has a significant number of pupils on bursary support, attending both our Junior and Senior Schools, who make very full and valued contributions to College life.

Unlike some schools, bursaries at Cheltenham College are not dependent upon performance or merit; they are available to any pupil who is able to meet our baseline entrance requirements, and whom we feel will strongly benefit from the education that Cheltenham College offers.

All bursaries are means tested. They are based on careful and sympathetic scrutiny of individual family circumstances and no rule of thumb generalisation of income levels is possible. Bursaries vary in size and in exceptional circumstances, support up to 100% of the fees may be available.

Further details can be obtained by downloading the 'Bursaries – Widening Access' document from the Cheltenham College website under the Admissions section.

Families in need of financial support should make contact either with the Director of Admissions or direct to the Bursar's office on 01242 265686. All financial information submitted by parents is treated in the strictest of confidence.



Scholarships & Awards

At Cheltenham College, excellence is encouraged across the breadth of school life, both academic and extra-curricular. One of the main vehicles for such encouragement is the offer of Scholarships and Exhibitions to those who show outstanding potential.

A Scholarship is limited to a maximum of 50% of the fees and an Exhibition to a maximum of 20% of the fees. Award holders may not receive more than 50% remission of fees, even when they hold Scholarships or Exhibitions in two or more categories. In exceptional circumstances, further awards may be made above this level by means of a Bursary, calculated on the basis of financial need. Further details of Bursaries, and how to apply for them, can be found on page 10 of this booklet or on the College website.

Awards are offered to boys and girls joining at 13+ or 16+. In addition to Academic Scholarships and Exhibitions, there are awards in Art, Design & Technology, Drama (13+ only), Music, Sport, as well as for strong all-round performers. Candidates may enter and win awards in more than one category. All those who do not enter for Academic Scholarships at 13+ must nevertheless fulfill College's normal academic entrance requirements.

Academic, Drama, Music and Sport awards are valid throughout the holder's time at College, subject to satisfactory progress, conduct and participation. Art and Design & Technology awards are valid, initially, for the three years prior to A Level, and are dependent on the subject being taken at GCSE. If the award holder chooses to study Art or Design & Technology respectively in the Sixth Form, the award will automatically continue. All award holders will be expected to go on to complete their studies in the Sixth Form. If they leave College before the end of the Upper Sixth, the award may be repaid in full, unless agreed otherwise with the Headmaster and Bursar.

Academic award holders will be expected to perform highly in all internal and public examinations and to participate and lead in subject societies as well as in Lower and Upper College societies. Drama award holders will be expected to audition for at least one production (either College or House) each year. All other award holders will be expected to play a full part in the life of College in respect of their particular awards. In addition, all Music award holders will be expected to sing in the Chapel Choir.

Qualities of Scholars

All Scholars must:

- Have a committed work ethos
- Show the capacity for independent work and thought
- Be highly recommended by their existing school
- Exhibit both excellence & flair in their field of expertise
- Be an ambassador for College at all times.

Academic Scholarships at 13+

Candidates sit Academic Scholarship papers at College over a two-day period in March of Year 8.

Scholarships are awarded for exceptional performance or potential demonstrated in the 13+ Academic Scholarship papers; the quality of a Scholar might emerge across a paper, or in the way a candidate has handled particular problems.

Scholarships or Exhibitions will be awarded either for exceptional performance in at least two subjects OR on the basis of a very strong performance overall in all subjects. To be eligible for a 13+ Academic Scholarship, candidates must sit and pass all the papers.

In addition to our Academic Scholarships and Exhibitions, each year we award three named 13+ Academic Scholarships:

- The Lord James of Hereford Scholarship (this rewards all-round academic excellence and is awarded to the candidate who performs best overall in the Scholarship papers)
- The Prain Scholarship (this rewards particular ability in Science and Mathematics)
- The Old Cheltonian Society Scholarship (this is awarded solely to the children of OCs who show particularly high ability. It is not necessarily awarded every year).

Candidates who pass all the Academic Scholarship papers, but who are not successful in gaining an award, will not be required to sit Common Entrance. Where a candidate fails more than one paper, at our discretion we reserve the right to ask the pupil to sit further entrance papers (eg: Common Entrance).

All candidates will be interviewed and will sit six or seven papers in the following subjects. Each paper will last 1 hour & 15 minutes:

- English
- Mathematics
- Science
- French AND / OR Latin
- General (Humanities) paper
- Verbal and non-verbal reasoning

It is expected that candidates who have studied French and Latin will sit both language papers. However, we acknowledge that individual circumstances may give rise to situations where only one of the languages has been studied in sufficient depth to attempt the scholarship paper. Candidates sitting only one language paper will remain eligible for an award.

Papers are set by College and are based on the Common Entrance Academic Scholarship syllabuses.

Past papers are routinely sent to Prep Schools. Parents of candidates from schools that have not been sent papers should ask their Head to contact the Director of Admissions.

Syllabus notes

English

There will be one paper, consisting of two sections, each of which will carry equal marks. Section A will be a series of questions, of increasing difficulty, in response to an unseen prose extract. Pupils' reading comprehension skills and ability to analyse the effect of language and stylistic features will be assessed. Section B will be a series of questions, of increasing difficulty, in response to an unseen poem. Pupils' ability to analyse the way poets use language and poetic techniques in order to develop meaning and achieve specific effects will be assessed.

Mathematics

There will be one paper based on the Common Entrance syllabus, which will require familiarity with the National Curriculum Attainment Targets up to level 6. The paper will also include the following level 7 topics: making estimates to one significant figure, understanding and using proportional changes, using symbolic notation to express rules for sequences, solving simultaneous linear equations in two variables, simple inequalities, Pythagoras' theorem and the relationship between distance, speed and time. Also required will be the following level 8 topics; the ability to calculate with fractions and the use of formulae involving substitution of fractions and negative numbers. Expressing positive integers as a product of primes will also be expected. The use of a calculator, protractor, ruler, and compass is allowed.

Science

Section A will be compulsory, containing short questions on each of the three Sciences. These will be relatively straightforward questions based on the Common Entrance specification. In Section B there will be a choice of any three from six questions, two each in the fields of Physics, Chemistry and Biology. This section will enable candidates to demonstrate ability in a wide range of Science skills: deductive, mathematical, graphical, experimental and an ability to use their own scientific knowledge, or information provided, to solve problems in unfamiliar contexts.

French

Candidates will take a Writing Test in which they will be required to demonstrate that they can use Past, Present and Future tenses accurately (aller+inf. is acceptable). The Reading Test will consist of a number of passages taken from contemporary sources, which reflect the areas of experience in the current GCSE syllabuses. Knowledge of the Passé Simple will not be required. Questions will be in both French and English. The Listening Test will be in a format similar to the Reading Test. Topics covered during the oral will be based on the GCSE areas of experience. Candidates will be required to show that they can communicate freely in a range of tenses. They will be assessed for response, accuracy and range of language. The ability to engage in a natural conversation, rather than the delivery of set pieces, will be rewarded.

Latin

The Latin paper will consist of two sections. The first section will contain one Latin passage for translation from Latin into English, and a second passage in Latin, on which comprehension questions are set. The second section will give candidates a choice: a more challenging comprehension, or five English sentences to translate into Latin. Limited vocabulary help (including principal parts) will be given for all sections, where it is felt that a word is too difficult.

General (Humanities) Paper

The General paper will be skills-based, using sources related to the history, geography and religion(s) of a given country. Candidates will not be expected to have any prior knowledge of the country. A specimen paper is available.

Academic Scholarships at 16+

Candidates sit 16+ Academic Scholarship papers at College over a two-day period in either November or March prior to entry. Candidates are accommodated overnight in one of the Houses, giving them an opportunity to experience life at College first hand.

General entry for pupils studying GCSE or iGCSE is also normally via these papers. For further details of general 16+ entrance, as well as for those pupils applying from overseas and not studying GCSE, please refer to page 6 of this booklet.

16+ Scholarship candidates will take papers in three subjects chosen from the list below. There will also be a General paper, a Verbal Reasoning (VRQ) paper and an interview.

Choice of subjects:

The subjects chosen should be ones currently studied and ones in which the candidate feels strongest. They should normally be the subjects that the candidate intends to study in the Sixth Form, although we understand that pupils' intentions may change between the scholarship examinations and the start of the Sixth Form. In particular, it is important to sit the papers in Mathematics, the Sciences or a Modern Language if the candidate is thinking of taking the subject to A Level. The papers are designed to test potential and are broadly based on Key Stage 4/GCSE. They do not test knowledge of a particular syllabus.

Examination subjects:

- Ancient Greek
- Biology
- Chemistry
- Design & Technology (various options)
- English Literature
- French
- Geography
- German
- History
- Latin
- Mathematics
- Physical Education
- Physics
- Religious Studies
- Spanish
- Theatre Studies

All place offers, including those made to Academic Scholars, shall remain subject to College's standard entrance requirement. While successful candidates should be aiming for considerably higher, they are required to gain a minimum of 5 B grades at GCSE or the equivalent, including a minimum of a C grade in English and Mathematics.

In addition, based on the outcome of the papers, College may make recommendations about candidates' suitability for certain AS and A level courses.

Art Scholarships

Art Scholars and Exhibitioners require:

- Exceptionally high standards in objective and observational drawing
- A portfolio of work demonstrating creativity and a wide range of ideas and techniques
- Leadership and independence of thought
- Flair and real commitment to the subject.

At 13+, Art Scholarships are offered on the basis of a submitted portfolio of work and a short creative test followed by an object drawing exam. Equal weighting is given to each. During the assessment there will be an interview with a member of staff to discuss the contents of the portfolio. The portfolio should contain evidence of a candidate's ability over as wide a range of materials as possible, but with particular emphasis upon sustained drawing. Large sculptural or ceramic pieces need not be included but where offered, photographs of these, with some idea of scale should be included. The work should not be over presented (i.e. framed or glazed).

Help may be given in selecting the work in order to show a candidate's abilities in the best possible light. Sketchbooks should be included where relevant. All the work of each candidate is marked and awards are made upon merit.

At 16+, the Art Scholarship consists of a formal interview with a member of staff. A portfolio of work containing current GCSE work, sketchbooks and any evidence of a candidate's artistic activity, including photographs of any sculptural pieces, should be presented. Independent work is particularly important, including sketchbooks and/or photographs. This will be discussed at the interview and awards will be made upon the merit of each candidate.

Design & Technology Scholarships

Design & Technology Scholars and Exhibitioners require:

- A strong interest in Design & Technology and the ability to express what they perceive to be good and bad design
- An understanding of the 'design process', how a problem is researched, a specification produced and designs developed
- An ability to produce realistic ideas combined with excellent manufacturing skills
- Good presentation skills
- Leadership, independence of thought and commitment to the subject.

13+ candidates must complete a set project. This project is a "design and make task" and should take the form of a themed mobile, which can include the use of paper, card, textiles, resistant materials and electronics. A folder must be produced in support of this, stating the situation for which it is designed and showing research into the chosen theme. A range of design ideas, a final design, a record of production and an evaluation must also be submitted. Candidates can choose from the following themes: water, architecture, wind, music, sport, natural forms, wildlife, the environment or education. It should be noted that twice as many marks are given for the product itself than for the folder. Extra guidance and the assessment criteria for the project can be sought from the Registrar.

The assessment will also include a short, non-specific paper, which will ask questions relating to the project submitted. This will be followed by an interview to discuss the project.

16+ candidates will be offered papers in the following Design & Technology disciplines: resistant materials, textiles technology, systems and control (electronics), or graphic products. They should submit their GCSE coursework project and this will form the basis of an interview.

Drama Scholarships (13+ only)

Drama Scholars and Exhibitioners require:

- An acting flair borne of extensive performance experience
- A genuine love for theatre & the performing arts as well as an understanding of the role they play within our society
- An ability to demonstrate insight & understanding of text through performance
- Outstanding communication skills and an ability to work well with others to shape and structure effective performance
- Leadership, independence of thought and commitment to extra-curricular Drama.

Candidates for the 13+ Drama Scholarship must prepare two monologues (each lasting between 1½ and 2 minutes), which they will perform as part of their assessment. The monologues should include at least one pre-twentieth century text, and be chosen to show the candidate's ability to perform diverse roles or in different styles. The assessment will also consist of a group workshop, in which the candidate's ability to work collaboratively with others to explore dramatic conventions and devise performance will be assessed. There will also be a brief interview, during which candidates will be questioned about their own performance experience as well as live performances they may have seen which have inspired them as actors.

We will also gladly accept any DVDs of past live performances or other records of involvement in extra curricular performing arts based activities.



Music Scholarships

Music Scholars and Exhibitioners require:

- A genuine love and enthusiasm for music
- Performance level (not necessarily formally examined) in their first study of at least Grade 5 at 13+ or Grade 7 at 16+
- A sound second study
- All-round involvement in the musical life of their current school
- Musical ambition.

College offers a generous range of Music Scholarships to candidates who show musical potential and, above all, a genuine enthusiasm for music. A high standard is expected for a major Scholarship, but there is a wide range of awards available for those who may not be so advanced, but who show a high level of promise and commitment. These are often suitable for a musical pupil who perhaps started rather later than others, but who will be able to contribute a great deal throughout his or her time at College.

The auditions are kept as relaxed as possible. Candidates should prepare two contrasting pieces on their main instrument/voice and expect to be given some sight-reading and aural tests. For second instruments/voice, normally one piece is sufficient. There will be a brief interview which will explore candidates' thoughts on what they wish to achieve musically.

All Music award holders are expected to sing in the Chapel Choir.

Music Lessons

All Music Scholarships include free tuition in two instruments/voice. Lessons are offered on the basis that they are taken with College music teaching staff. However, it is acceptable for one instrument (or singing) to be taken with an external teacher. Under certain circumstances, College will be prepared to reimburse such lessons up to the equivalent internal cost. If more than one set of music lessons is taken outside College's music department, such lessons will be at parents' own expense.

Choral Scholarships

Choral Scholarships are available at 13+ and 16+ for candidates who are confident and enthusiastic singers. The College Chapel is widely regarded as one of the finest in the country and the school enjoys a long choral tradition. The large choir, with many former cathedral choristers, sings weekly services and performs concerts in the UK and abroad. A Choral Scholarship also offers full preparation to exceptional pupils who wish to apply for Oxbridge and other university choral awards. For audition, two or three songs should be prepared and sight-reading, appropriate to the candidate's ability, will be given. For Choral applicants a second study is not always required; please discuss individual circumstances in the first instance with the Registrar.

Sixth Form (16+) Organ Scholarship

College offers an Organ Scholarship for a talented organist of at least Grade 6 standard to take a major role in the musical life of the Chapel. In addition to specialist teaching for repertoire and technique, there is plenty of opportunity to develop accompanying through working with the Chapel Choir. The Chapel has a magnificent 40-stop Harrison & Harrison organ on which the Organ Scholar will play for the daily Chapel services, recitals and other occasions. The Organ Scholar will be guided in preparation for all aspects of the Oxbridge Organ Scholarships, RCO diplomas and auditions for music colleges.

It is recommended that prospective candidates contact the Director of Music to arrange a pre-audition and informal interview in the Autumn Term 2011.

Sport Scholarships

Sport Scholars and Exhibitioners require:

- Speed, agility, balance and co-ordination
- Good spatial awareness
- A sound understanding of games tactics
- A positive attitude to training and an open minded approach to coaching
- The demeanour to be an ambassador for College at all times.

Sport has a long and well-respected tradition at Cheltenham College. Numerous pupils have achieved national recognition whilst still attending College and many pupils have gone on to represent their countries across a variety of sports, including athletics, cricket, hockey, rowing, rugby and shooting.

It is College's aim to support applications from boys and girls of outstanding sporting potential, who will benefit from the unique combination of educational and sporting opportunities that College offers.

Candidates will be encouraged to show particular potential in at least one of College's Main Games:

For boys: Rugby, Hockey, Cricket, and Rowing

For girls: Netball, Hockey, Tennis and Rowing

It must be emphasised however, that outstanding expertise in any sphere of sport will be considered. Candidates able to offer ability in a combination of sports are encouraged to apply, as are those who have outstanding potential in one sport. Clearly, however, the more areas of strength offered, the greater the chances of success.

Every effort will be made to see candidates in their own environment; we will particularly try to see them playing for their own school or club. Where this is not possible, video evidence may be offered in support of applications. At the selection course at College, candidates will be assessed in a range of sporting skills and physical abilities, many of which seek to test a candidate's aptitude in non game situations and/or in sports they may not previously have played.

All-round Scholarships (13+ only)

Candidates may not specifically apply for this award but, at the College's discretion, pupils entering and performing well in at least two of the recognised Scholarship disciplines may be awarded an All-round Scholarship or Exhibition in their place.

There will be no separate assessment for this award; the entrance and assessment criteria for the individual scholarship disciplines will apply.

Typically, this award will be made to candidates who perform to at least exhibition standard, or near exhibition standard, in a minimum of two recognised scholarship disciplines.

An All-round Scholarship may be awarded to an exhibition holder in two or more disciplines where the combined award value is at least 25% but this will not be automatic.

In all cases, candidates must be comfortably able to pass Common Entrance (or the equivalent) and be highly recommended by their current school. Additional consideration will be given to positions of responsibility held at the candidates' current school, as well as to demonstrated exceptional commitment to extra curricular activities, both inside and outside of school. Supporting references will be accepted.

The award of an All-round Scholarship or Exhibition is not automatic; there will be candidates to whom the College prefers to offer two or more discipline specific awards instead. It should be noted, however, that if a candidate is offered an All-round award, this will be in place of all other awards.

Directions

Cheltenham is well served by Rail and Road Networks. On arrival, visitors are requested to report directly to Reception. This is located at the front of the main building on Bath Road, under the clock tower. Car parking is available.



By Rail

Cheltenham Spa Railway Station is on the main line network and is served by frequent Inter-city and local trains. It is two hours from London (Paddington).

By Air

Heathrow Airport has a regular coach service to Cheltenham approximately every two hours. Birmingham International and Bristol airport are both approximately one hour away by road.

By Road

Cheltenham College is situated on the A46 Bath Road on the south side of Cheltenham. Directions for visitors entering Cheltenham on the principle road routes are as below.

From Tewkesbury and M5 Junction 10 (Southbound)

Enter Cheltenham on the A4019, follow signs for Stroud via Gloucester Road, Queens Road, Andover Road and Suffolk Road.

From Gloucester and M5 Junction 11

Enter Cheltenham on the A40 via Golden Valley Bypass, follow signs for Oxford via A40 Lansdown Road, Andover Road and Suffolk Road.

From Oxford

Enter Cheltenham on the A40 London Road, follow signs for Gloucester via Sandford Mill Road, Old Bath Road and either Sandford Road or Thirlestaine Road.

From Bath & Stroud (A46)

Enter Cheltenham via the A46 Shurdington Road and Bath Road.

From Evesham and Stratford-on-Avon (A435)

Enter Cheltenham on the A435 Evesham Road. Follow signs for Stroud via Clarence Road, Winchcombe Street, Fairview Road, Berkeley Street, High Street and Bath Road.

From London, Swindon and Cirencester

Enter Cheltenham on the A419, A417 and A46 Shurdington Road and Bath Road.



Cheltenham College, Bath Road, Cheltenham, Gloucestershire, GL53 7LD
Tel: 01242 265600 | Fax: 01242 265630
www.cheltenhamcollege.org

Registration Form

One form should be completed for each child and returned to the Registrar with the Registration Fee of £100 per child. Please note that both parents must sign this form.

Pupil's personal information

Surname _____

Full Forename(s) (Please underline name normally used) _____

Date of Birth _____ Religion _____

Gender _____

Pupil's Nationality and First Language _____

Parents' Contact Details (giving titles and initials). If separated, please state here: _____

Father's Contact Details

Mother's Contact Details (only include address if different)

Tel: Day _____ Eve _____

Tel: Day _____ Eve _____

Mobile _____

Mobile _____

Email _____

Email _____

Father's Occupation (Please state the nature of your occupation) _____

Mother's Occupation (Please state the nature of your occupation) _____

Is either parent currently a member of HM Armed Forces? Yes No

UK Bank name and address (non UK residents only) _____

If an Old Cheltonian, House and dates at College _____

Please give the names of other members of the family attending College (or CCJS) or registered for entry

Present school _____

Head's name _____

School address _____

School Telephone Number _____

Have you registered, or do you intend to register, at any other school? Yes No

If yes, please state the name of the school _____

Entry level: Year 9 (13+) Year 10 (14+) Year 12 (16+)

Year of entry: September _____

Entry required as a: Boarder / Day Boarder / Day pupil (please delete accordingly)

In order to maintain similar numbers in all Houses, College reserves the right to allocate pupils to Houses. However, if you have a preference for a particular House, this may be stated below. Please also indicate a second choice of House. We will endeavour to meet your preference, wherever possible, but cannot guarantee it.

Please tick / complete as appropriate:

No House preference 1st preferred House _____ 2nd preferred House _____

Scholarships (13+ and 16+ only)

Are you interested in receiving further information about one of our awards? If so, please indicate type:

Academic Art Design Technology Drama (13+ only)
 Music Sport All-Round (13+ only and awarded at College's discretion)

Special circumstances

Does your child have any specific learning difficulties or special educational needs? Yes No

Are there any significant health/medical issues or allergies of which College should be aware? Yes No

If you have answered yes to either of the above, please supply brief details below

Up-to-date details will be requested by College shortly before entry.

Helpful information

Please state what first made you consider Cheltenham College for your son or daughter. (Please tick)

Current parents' recommendation Present school's recommendation
 Old Cheltonian's recommendation Advertisement. Please state publication _____
 Other. Please state _____

Declaration by parent or guardians (Both parents must sign this form)

We accept the terms and conditions of the Admissions Policy, a copy of which can be found on our website:
www.cheltenhamcollege.org/senior-policies

Signed _____

Signed _____

Print Name _____

Print Name _____

Date _____

Date _____

Please return the completed form to the Registrar, Cheltenham College, Bath Road, Cheltenham, Gloucestershire, GL53 7LD, together with the registration fee of £100. This fee is non-refundable.

13+ Scholarship Application Form

(This is not a registration form. You must also complete the Registration Form)

All applications should be accompanied by a Head's report and reports from relevant Heads of Department as requested. Please also provide a passport-sized photograph.

Pupil's Surname _____ Date of Birth _____

Pupil's Full Forename(s) (Please underline name normally used) _____

Pupil's Nationality and First Language _____

Parent's or Guardian's Name (giving title and initials) _____

Address _____

Telephone Number _____ Fax Number _____

Email _____ Mobile _____

Present School _____

Head's Name _____

School Address _____

School Telephone Number _____ Fax Number _____

Other schools you are applying to for Scholarships _____

Is Cheltenham College your preferred choice? Yes No

If no, please state your preferred choice of school _____

Type of Scholarship being entered for (please tick one or more)

Academic Scholarship
 Will the pupil be offering Latin in addition to French? Yes No

Art Scholarship This must be accompanied by a report from the Head of Art

Design & Technology Scholarship This must be accompanied by a report from the Head of DT

Music / Choral Scholarship This application must be accompanied by a report from the Head of Music and information regarding musical achievements, including last grade exam taken and results and how long the candidate has been having lessons.

Instrument / Voice _____

Drama Scholarship This application should be accompanied by a report from the Head of Drama, including information on the candidate's participation in school productions.

Sport Scholarship This application must be accompanied by a report from the Head of Sport / PE and information regarding sporting achievements, including principal sports offered, specific positions (e.g. scrum-half, goal-attack), teams (school and representative), sporting successes.

All-round Scholarship Please note that this award may not be applied for specifically. Candidates applying for one or more awards will be considered for this award automatically.

For ALL Awards Please provide details below of any extra curricular activities and major achievements both inside and outside of school (providing external testimonials in addition to school references where appropriate). Please also include details of any positions of responsibility held.

Declaration

I undertake that if a Scholarship or Exhibition is offered and accepted, my son or daughter will not subsequently sit for a Scholarship at another school.

I accept the terms and conditions for Registration and Admission.

Signed _____

Date _____

16+ Entrance Assessment Application Form

(This is not a registration form. You must also complete the Registration Form)

All applications must be accompanied by a Head's reference and a passport-sized photograph.

Pupil's Surname _____ Date of Birth _____

Pupil's Full Forename(s) (Please underline name normally used) _____

Pupil's Nationality and First Language _____

Parents' or Guardians' Name (giving title and initials) _____

Address _____

Telephone Number _____ Fax Number _____

Email _____ Mobile _____

Present School _____

Head's Name _____

School Address _____

School Telephone Number _____ Fax Number _____

Please also give the name of any school attended since the age of 11 _____

Other schools you are applying to for Scholarships _____

Choice of entrance papers

Candidates sitting papers at the College in November or March

You should select **three** subjects in which to be examined from the list below. You will also sit a General Paper and a Verbal Reasoning (VRQ) paper.

The subjects you select from this list should be the ones in which you feel strongest and ideally ones that you intend to study in the Sixth Form although this is not compulsory. It is, however, strongly advised to take Mathematics, the Sciences or a Modern Language if these are possible AS or A level choices.

- | | | | |
|--|---|---|--|
| <input type="checkbox"/> Ancient Greek | <input type="checkbox"/> English Literature | <input type="checkbox"/> History | <input type="checkbox"/> Physics |
| <input type="checkbox"/> Biology | <input type="checkbox"/> French | <input type="checkbox"/> Latin | <input type="checkbox"/> Religious Studies |
| <input type="checkbox"/> Chemistry | <input type="checkbox"/> Geography | <input type="checkbox"/> Mathematics | <input type="checkbox"/> Spanish |
| <input type="checkbox"/> Design Technology | <input type="checkbox"/> German | <input type="checkbox"/> Physical Education | <input type="checkbox"/> Theatre Studies |

Other candidates (subject to available space)

1. If you are taking GCSE, you should select three subjects from the list above. You may if you wish, choose the General Paper as one of your three choices.
2. If English is not your first language, you will usually sit papers in Mathematics and English for Overseas Pupils, and take the General Paper. Alternative subjects in which to be examined may be discussed with the Director of Admissions and will depend upon your proposed choice of AS and A levels.

In addition, all candidates are required to complete a personal profile form, this can be obtained from the Registrar.

Type of Scholarship

Please tick below if you wish to be considered for any College scholarships. *(November and March Assessments at College only)*

Academic Scholarship

Please note that all candidates, whether for scholarship or entry, sit the same level of paper, which is designed to assess both suitability for entry and scholarship qualities. We award scholarships on the basis of performance in these papers. It is, however, helpful for us to know if you would like to be considered for a scholarship.

Art Scholarship This application must be accompanied by a report from the Head of Art.

Design & Technology Scholarship This application must be accompanied by a report from the Head of DT.

Music / Choral / Organ Scholarship This application must be accompanied by a report from the Head of Music and information regarding musical achievements, including last grade exam taken and results, and how long the candidate has been having lessons.

Instrument / Voice _____

Sport Scholarship This application must be accompanied by a report from the Head of Sport / PE and information regarding sporting achievements, including principal sports offered, specific positions (e.g. scrum-half, goal-attack), teams (school and representative), sporting successes.

Please list below the sports being offered for Scholarship assessment. Whilst it is usual to include at least two sports, this is not essential if a particular excellence in a College main game is exhibited.

For ALL Awards Please provide details below of any extra curricular activities and major achievements both inside and outside of schools (providing external testimonials in addition to school references where appropriate). Please also include details of any positions of responsibility held.

Declaration

I undertake that if a Scholarship or Exhibition is offered and accepted, my son or daughter will not sit subsequently for a Scholarship at another school.

I accept the terms and conditions for registration and admission.

Signed _____

Date _____

This form should be sent by the published closing date with reports from the Head and relevant Heads of Department to: The Registrar, Cheltenham College, Bath Road, Cheltenham, Gloucestershire, GL53 7LD



Cheltenham | **College**
GIRLS AND BOYS 13 to 18 BOARDING / DAY



Cheltenham College, Bath Road,
Cheltenham, Gloucestershire, GL53 7LD

Tel: 01242 265600 | Fax: 01242 265630
Email: admissions@cheltenhamcollege.org
www.cheltenhamcollege.org